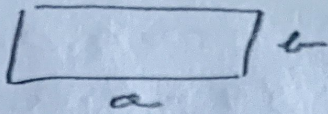


$$U: 146/7$$

$$a = 45 \text{ cm}$$

$$b = 30 \text{ cm}$$



$$\sigma = 2 \cdot a + 2 \cdot b$$

$$\sigma = 2 \cdot 45 + 2 \cdot 30$$

$$\sigma = 90 + 60$$

$$\sigma = 150 \text{ cm}$$

15 OKVIRTEV

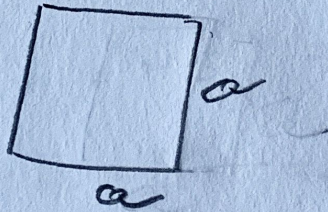
$$15 \cdot 150 = 2250 \text{ cm}$$

$$= \underline{22,5 \text{ m}}$$

22,5 m LETVICE

$$U: 146/8$$

$$a = 3,6 \text{ m}$$



$$\sigma = 4 \cdot a$$

$$\sigma = 4 \cdot 3,6$$

$$\sigma = 14,4 \text{ m}$$

14,4 m

$$\underline{U: 146/9}$$

$$\underline{a) \sigma = 84 \text{ dm}}$$
$$a =$$

$$\sigma = 4 \cdot a$$
$$84 = 4 \cdot a$$
$$a = 84 : 4$$
$$\underline{\underline{a = 21 \text{ dm}}}$$

$$\underline{b) \sigma = 12 \text{ m } 56 \text{ cm} = 12,56 \text{ m}}$$
$$a =$$

$$\sigma = 4 \cdot a$$
$$12,56 = 4 \cdot a$$
$$a = 12,56 : 4$$
$$a = 3,14 \text{ m}$$
$$\underline{\underline{a = 314 \text{ cm}}}$$

$$\underline{U: 146/10}$$

$$\underline{a) \sigma = 52 \text{ cm}}$$
$$a = 17 \text{ cm}$$

$$\underline{b =}$$

$$\sigma = 2 \cdot a + 2 \cdot b$$
$$52 = 2 \cdot 17 + 2 \cdot b$$
$$52 = 34 + 2 \cdot b$$
$$2 \cdot b = 52 - 34$$
$$2 \cdot b = 18$$
$$b = 18 : 2$$
$$\underline{\underline{b = 9 \text{ cm}}}$$

$$b) \sigma = 5 \text{ m} = 50 \text{ dm}$$

$$b = 7 \text{ dm}$$

$$\underline{a =}$$

$$\sigma = 2 \cdot a + 2 \cdot b$$

$$50 = 2 \cdot a + 2 \cdot 7$$

$$2 \cdot a = 50 - 14$$

$$2 \cdot a = 36$$

$$a = 36 : 2$$

$$\underline{\underline{a = 18 \text{ dm}}}$$

$$c) \sigma = 13,8 \text{ dm} = 138 \text{ cm}$$

$$a = 43 \text{ cm}$$

$$\underline{b =}$$

$$\sigma = 2 \cdot a + 2 \cdot b$$

$$138 = 2 \cdot 43 + 2 \cdot b$$

$$2 \cdot b = 138 - 86$$

$$2 \cdot b = 52$$

$$b = 52 : 2$$

$$\underline{\underline{b = 26 \text{ cm}}}$$